

DATASHEET

Pressure

Pressure&Temperature Transmitter For Industry Process Control

Model **PWP350-PT**

Applications

- Power station
- Coal & mine
- Chemical industry
- Petroleum
- Agriculture, hydrology
- Shipbuilding, metallurgy
- Industrial process control

Features

- Pressure and temperature output
- Suits almost all industrial applications
- Equipped with 3 intelligent protection
- High stability, low drift
- Full sealed high stability impact design
- Variety choices for outputs, electrical connector and pressure port



Pressure transmitter PWP350-PT

Description

PWP350-PT pressure transmitter/transducer applies high quality Germany imported piezoresistive pressure sensor chip and PT100 as sensing elements, with a fully welded stainless steel housing. Equipped with 3 intelligent protection: Over-voltage, over-current and polarity protection. After temperature compensation, digital circuit correction and signal conditioning, it outputs standard industrial application and networking signals to realize measurement for both pressure and temperature.

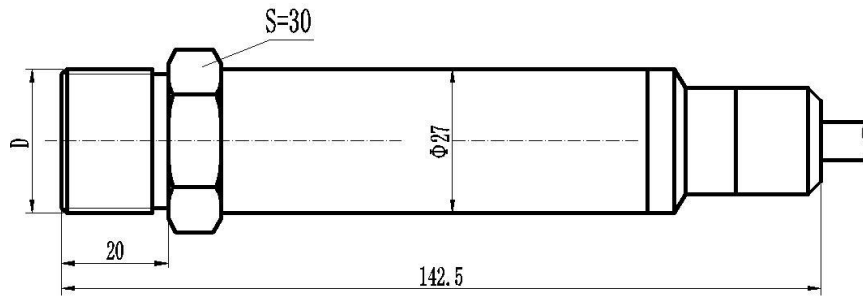
PWP350-PT has high measurement accuracy, fast response speed, stable output and reliable performance. A variety of outputs are available, and special requirements can be customized on demand.

To be proven as the excellent performance for many solutions worldwide. OEM&ODM is available. Come to us to know more.

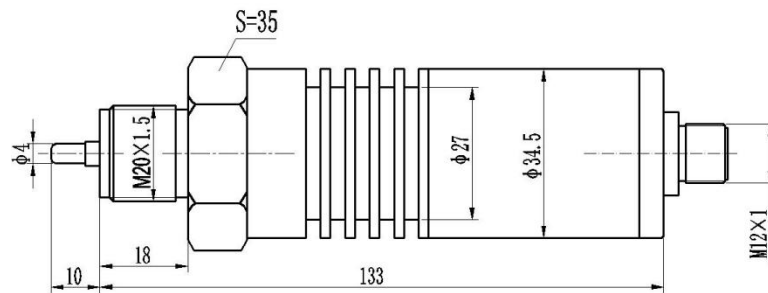
Specifications

Model	PWP350-PT		
Pressure Type	Relative (gauge) /Absolute pressure/Sealed gauge pressure		
Pressure Range	-0.1MPa ... 0kPa~10kPa ... 100MPa		
Temperature range	-20℃~+100℃(can be customized)		
Safe Overload	≤200%FS(<10MPa); ≤150%FS(≥10MPa)		
Burst Pressure	300%FS		
Electrical Connection & IP Rating	Directly outlet cable... IP67 DIN43650 Hirschmann Connector... IP65		
Accuracy	Pressure: ±0.5%FS(Typical), ±0.25%FS Temperature: ±1.0℃(Typical), ±0.5℃		
Signal Output & Power Supply	Dual 4-20mA 3 wires 12-30VDC	Dual 0-5V/0-10V 4 wires 8-24VDC/12-30VDC	RS485 Modbus 4 wires 5-30VDC
Response Time	≤3ms (10%~90%)		
Medium Compatible	Liquid compatible with ceramic and stainless steel SUS304, SS316L material		
Load Resistance(2 wires)	R≤(U-10)/0.02-RD (U: Power supply, RD: Internal resistance in the cable)		
Total current consumption	Current signal(2wires): Max about 23mA Voltage signal(3wires): <5mA RS485(4wires): <5mA (Available to customize low consumption <1.1mA)		
Accuracy&Performance	0.25% Accuracy Class	0.5% Accuracy Class	
Non-linear (%FS)	≤0.2	≤0.4	
Hysteresis (%FS)	≤0.05	≤0.1	
Repeatability (%FS)	≤0.05	≤0.1	
Long-term Stability (%FS/year)	≤0.2	≤0.5	
Zero Temp Drift (%FS/℃)	≤0.03	≤0.05	
Compensation Temp.	0℃~+50℃(≤200kPa), -10℃~+60℃(>200kPa)		
Working Temp.	-20℃~+100℃		
Storage Temp.	-20℃~+100℃		
Vibration Environment	10g (@10Hz~2000Hz)		
Impact Resistance	100g/11ms		
Service Life	>10 million load cycles (within measurement range)		
Explosion Proof	Exia II CT6 (optional)		
EMC Standard	EN IEC 61326-1:2021; EN IEC 61326-2:2021		

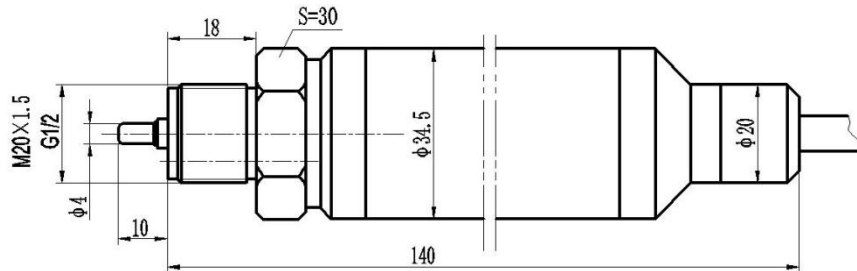
Dimensions and Drawings



Range≤100MPa



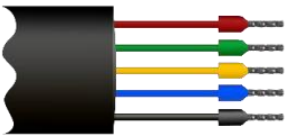
Range≤60MPa



Range≤25MPa

*Unit is mm. Above is typical structures. Other structures and dimensions can be customized.

Electrical Connection

Directly outlet cable				
	Wire Color	Dual Current (3wires)	Dual Voltages (4wires)	RS485 (4wires)
	Red	Vcc	Vcc	Vcc
	Green	Plout	GND	GND
	Yellow	TIout	PVout	RS485A
	Blue	/	TVout	RS485B
	Black	PE	PE	PE



How to Order

Example Part Number: 350PTC[10]BGT1S1C2A1M1001

Model No.	PWP350-PT	350PT
Electronic Connection	C=Direct outlet cable H=DIN43650 Hirschmann terminal box 0=Customized	C
Pressure Range	-0.1MPa ... 0kPa~10kPa ... 100MPa Directly write in []	[10]
Pressure Units	B=bar P=Psi K=kPa M=MPa	B
Pressure Type	G= Gauge/Relative A=Absolute S=Sealed gauge pressure	G
Signal Output	T1=Dual 4-20mA for P+T (typical) T2=Dual 0-5V for P+T T3=Dual 0-10V for P+T T4=RS485 Modbus RTU T0=Customized	T1
Power Supply	S1=12-30VDC S2=8-24VDC S3=5-30VDC S0=Customized	S1
Pressure Connection	C1=M20x1.5 male C2=G1/2" male C3=M30 x 1.5 male C0=Customized	C2
Accuracy	A1=0.5%F.S. A2=0.25%F.S. A3=0.1%F.S.	A1
Housing Material	M1=SUS304(Typical) M2=316L M0=Customized	M1
Cable Length	000=Non-cable 001= 1m cable 002= 2m cable ...	001

*Means to order: Pressure transmitter PWP350-PT directly cable outlet, 0~10 bar Gauge, dual 4-20mA, 12-30VDC, G1/2" male, 0.5%FS accuracy, SUS304 material, cable length is 1 meter.

You may also Need

Reference Picture	Description	Product
	To connect with pressure transmitter and to have a site indicator of the measured value, have high&low value alarms, record and control.	Display/indicator/controller
	Cast aluminum material with IP67 protection level for submersible pressure transmitter. Moisture-proof sealing design, insulation protection against electric shock. To be placed in dry environment or in a cabinet.	Terminal box 0010

***Tell us medium / which application / measuring range / working temperature / signal output / what you wanna to realize, our sales engineer will recommend suitable model for you.*