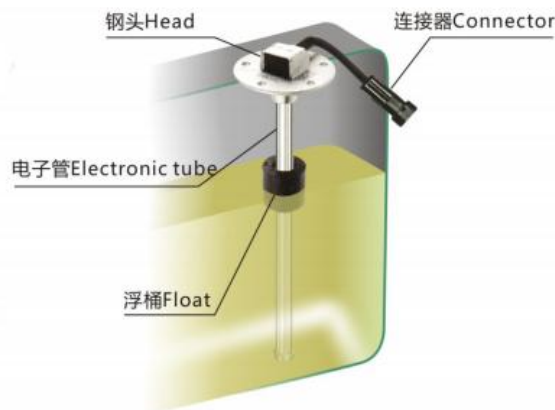


## DATASHEET

## Level

### Float Type Level Transmitter Liquid/Fuel Level Sensor Model **PWL-F**



#### Applications

- Engine fuel tanks
- Yachts diesel tanks
- Fuel tanks in trucks
- Construction machinery
- Vehicles, ships, motorcycle oil tanks
- Petroleum, chemical, pharmacy, beverage
- Oilcan, train, plane oil height measurement

#### Features

- Probe length 100-2000mm acc. to tank height
- Long service life, anti-vibration
- Standard SEA 5-hole or thread installation
- Protection level: IP67
- Output 0-190Ω, 240-33Ω, 4-20mA, 0.5-4.5V...
- Accuracy: 4.5mm, 7mm, 10mm, 21mm, 35mm

#### Description

PWL-F adopts the principle of magnetic filed control to make and break the contacts of the reed tube. It has the characteristics of long service life, free of maintenance, anti vibration, no electric sparks, explosion-proof features.

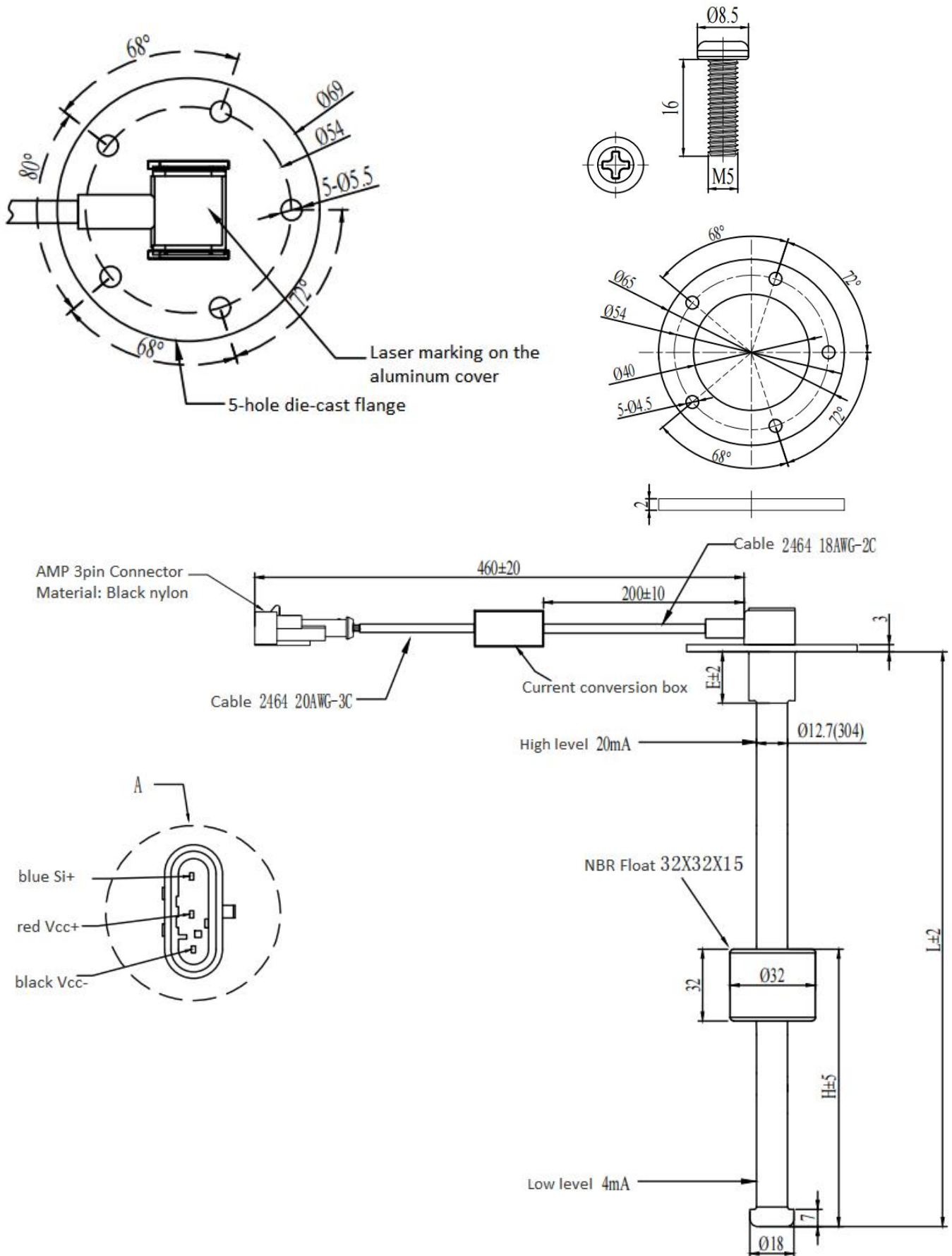
Tens of thousands of sensors applied annually in the fields such as generators, yachts, trucks and construction machinery. The output signals can be resistance signals or current and voltage signals. Customization on probe length, electronic connector and accuracy is feasible.

Let Pokcenser provide timely and tailored solutions for your production and industrial control. Welcome your inquiry.

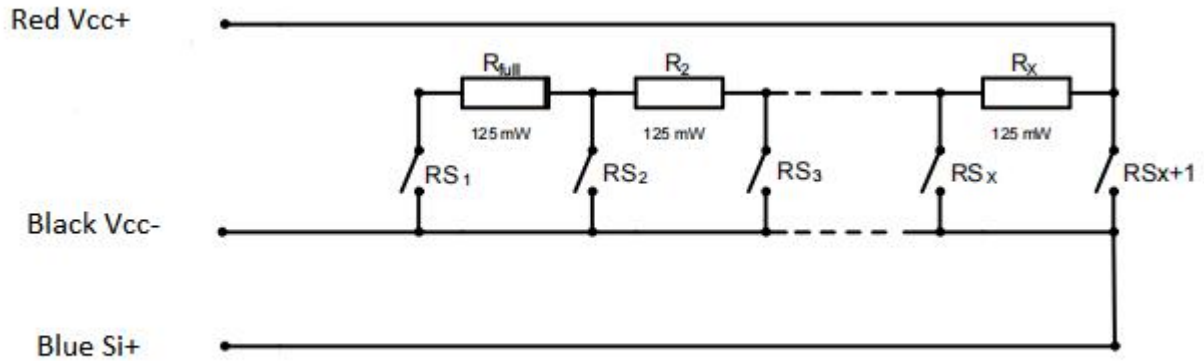
## Specifications

Model	PWL-F
Pressure Type	Relative (gauge)
Probe Length	0mm~150mm...2000mm
Main Material	SUS304 or 316L stainless steel
Installation Method	Flange: Standard SAE 5 hole mounting flange (supplied with M5 screws and NBR gasket) Thread: BSP 1-1/4, BSP 1-1/2, NPT1", G3/4 optional (Including O-sealing rings)
Electrical Connection	Brand Delphi, Tyco or other by customization
Accuracy	4.5mm, 7mm, 10mm, 21mm, 35mm optional
Signal Output	0-190Ω, 240-33Ω 0-20mA, 4-20mA 0.5-4.5V, 0-5V Or other by customization
Power Supply	24-32VDC
Rated power	125mW
Rated current of alarm switch	500mA
Cable Material	PVC
Resolution	21mm, 16mm and 12mm can be customized
Working Temp.	-40℃~+85℃
Protection Level	IP67

## Dimensions and Drawings



## Electrical Connection



*\*\*Tell us medium / which application / measuring range / working temperature / signal output / what you wanna to realize, our sales engineer will recommend suitable model for you.*